

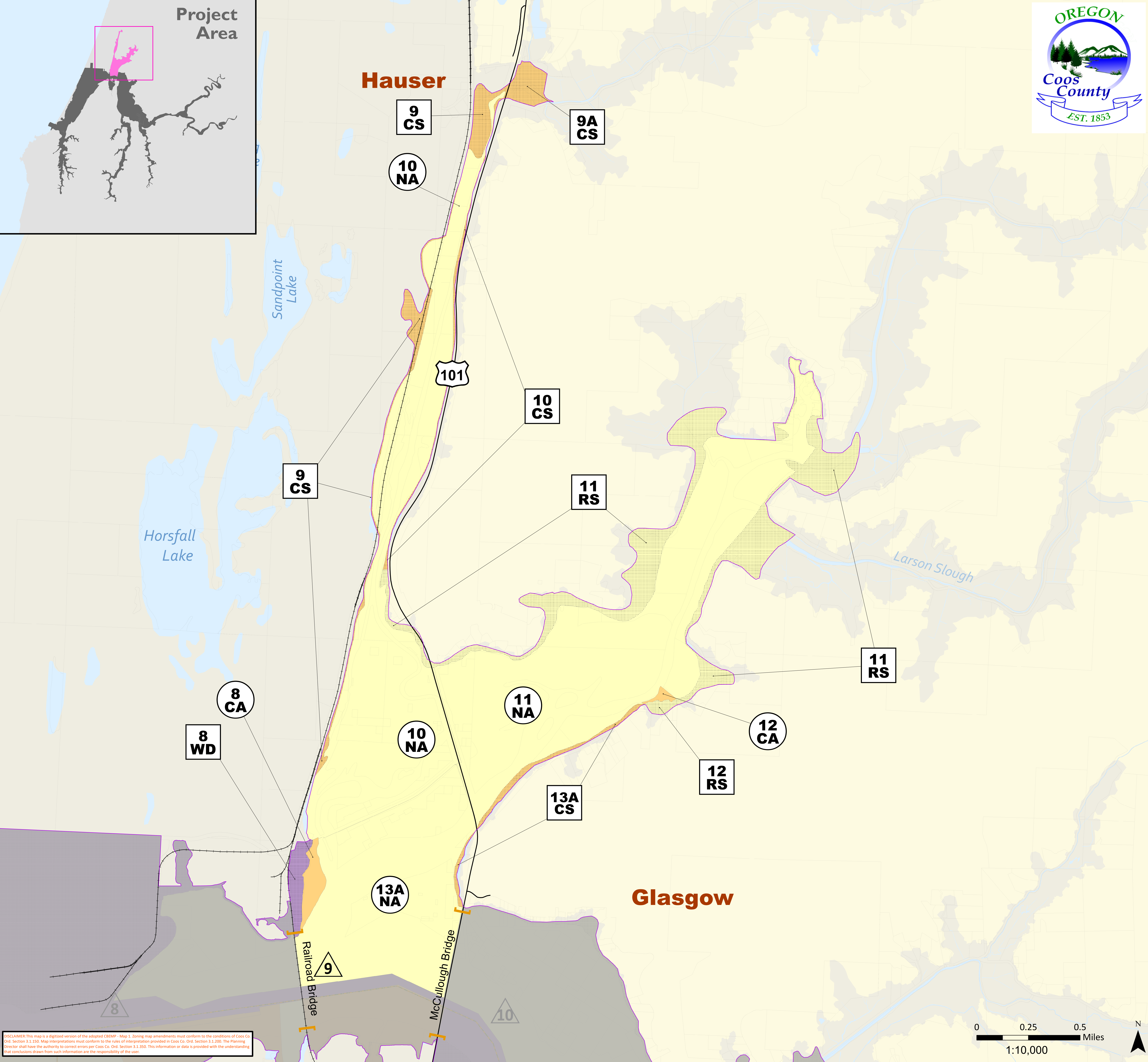


Project Area

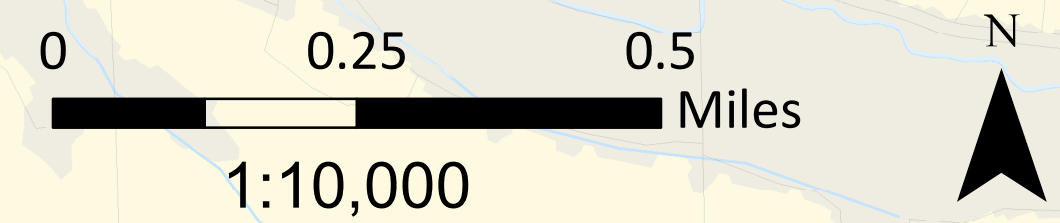


Hauser

Glasgow



DISCLAIMER: This map is a digitized version of the adopted CBEMP - Map 3. Zoning map amendments must conform to the conditions of Coos Co. Ord. Section 3.1.150. Map interpretations must conform to the rules of interpretation provided in Coos Co. Ord. Section 3.1.200. The Planning Director shall have the authority to correct errors per Coos Co. Ord. Section 3.1.350. This information or data is provided with the understanding that conclusions drawn from such information are the responsibility of the user.



Plan Map



North Slough/Haynes Inlet

- Aquatic Unit
- Natural Aquatic
- Conservation Aquatic
- Development Aquatic
- Shoreland Unit
- Natural Shoreland
- Conservation Shoreland
- Development Shoreland

- ▭ CBEMP Boundary
- ▭ Study Area Parcels
- ▭ Study Area Boundary
- ▭ UGB
- ▭ City Limits
- Railroads
- Roads

Map MI.2