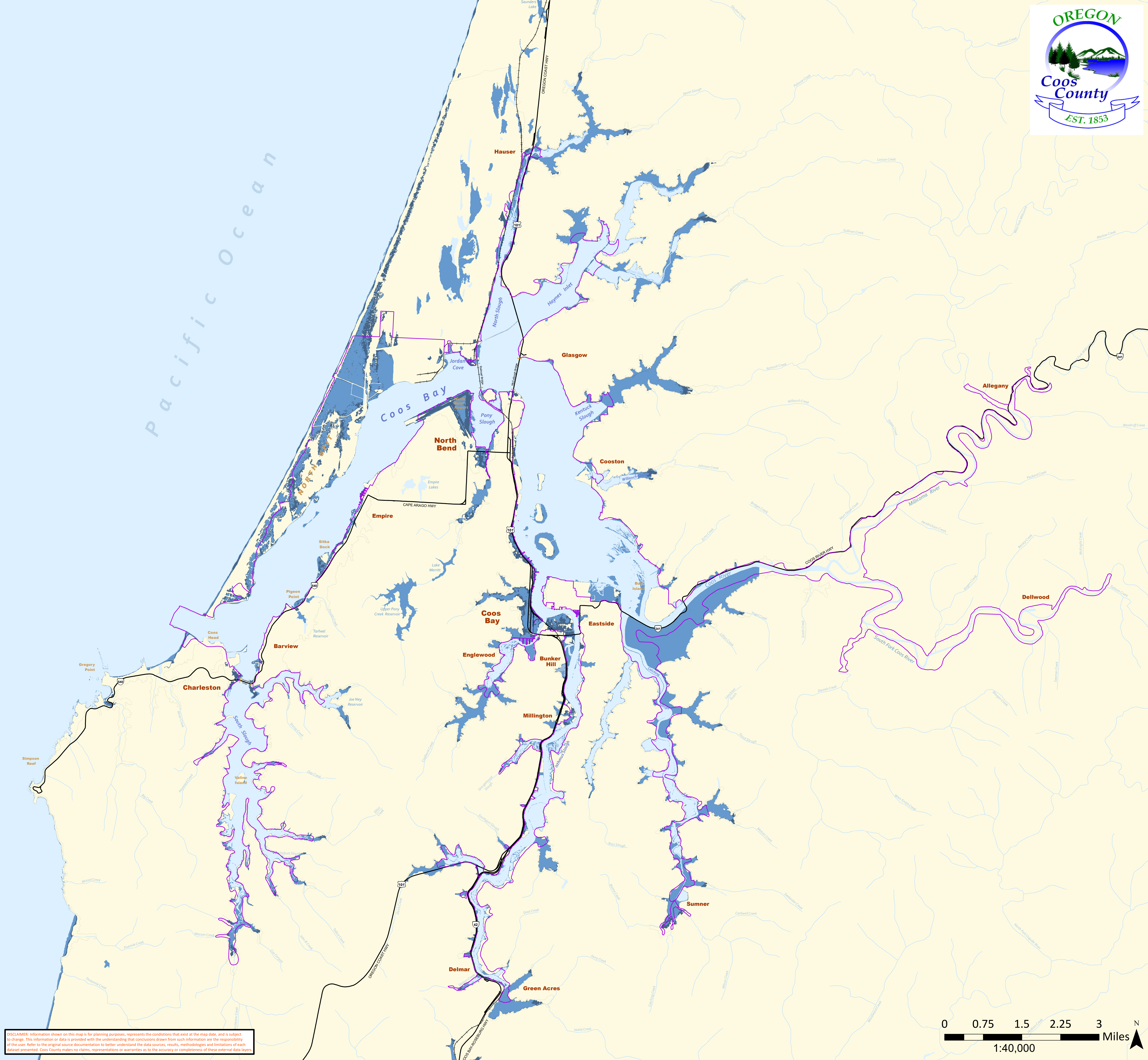
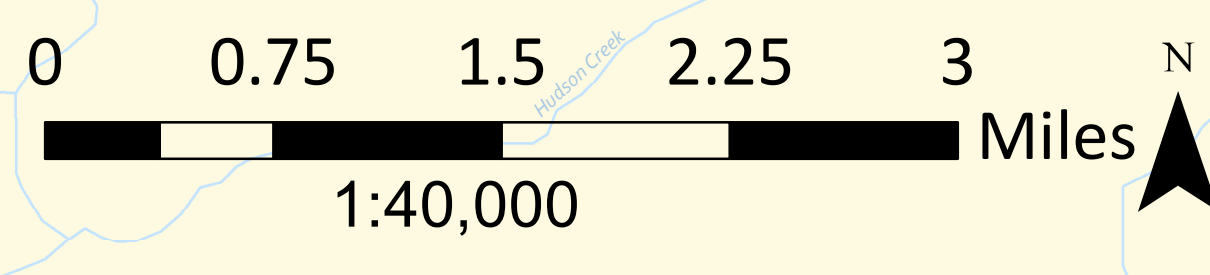




Pacific Ocean



DISCLAIMER: Information shown on this map is for planning purposes, represents the conditions that exist at the map date, and is subject to change. This information or data is provided with the understanding that conclusions drawn from such information are the responsibility of the user. Refer to the original source documentation to better understand the data sources, results, methodologies and limitations of each dataset presented. Coos County makes no claims, representations or warranties as to the accuracy or completeness of these external data layers.



# Sea Level Rise

UNIVERSITY OF OREGON Institute for Policy Research and Engagement

The data in this map illustrates the scale of potential sea level rise flooding, not the exact location, and do not account for erosion, subsidence, or future construction. Water levels are relative to Mean Higher High Water (MHHW) (excludes wind driven tides). The map should be used strictly as a screening-level tool for management decisions and as a planning reference tool and not for navigation, permitting, or other legal purposes. For more information see Sweet et. al. "NOAA Technical Report NOS CO-OPS 083. Global and Regional Sea Level Rise Scenarios for the United States." 2017 and Sweet et. al. "NOAA Technical Report NOS 01. Global and Regional Sea Level Rise Scenarios for the United States: Updated Mean Projections and Extreme Water Level Probabilities Along U.S. Coastlines." 2022

<b>Sea Level Rise Scenarios</b>		CBEMP Boundary
Current Sea Level (Baseline year 2000)	Potential Sea Level Rise (2 feet)	Study Area Boundary
Potential Sea Level Rise (4 feet)	Potential Sea Level High (6 feet)	Railroads
		Roads

# Map 5.8