



Oregon

John A. Kitzhaber MD., Governor

Department of Fish and Wildlife

Charleston Field Office
63538 Boat Basin Dr.
P.O. Box 5003
Charleston, OR 97420
(541) 888-5515
FAX (541) 888-6860



February 4th 2015

Rick Hallmark
1975 McPherson, # 1
North Bend, OR 97459

RE: Oregon Department of Fish and Wildlife 2014 mosquito sampling.

Dear Rick:

As you are aware the Oregon Department of Fish and Wildlife (Department) initiated sampling in 2014 to develop general mosquito abundance baseline data and species composition information for the Department owned properties near Coquille, OR (Figure 1). Sampling locations included the Department's Winter Lake and Beaver Slough tracts, and two other sites: Hinch Bridge on South Slough, and another near Catching Slough (Figure 1). The Department incorporated Bioquip Heavy Duty EVS CO₂ Mosquito Traps set at dusk and pulled the following morning. Trapping was conducted a total of six nights in the S.E. corner of the Winter Lake tract and five nights in the N.W. portion, between August 13th and September 18th. Similarly, traps were operated a total of six nights at the Beaver Slough tract's North Bank location (Figure 1) and five nights at the Beaver Slough tract's eastern site, between August 13th and September 18th. The Hinch Bridge location on South Slough was sampled on a single night, August 29th and the Catching Slough location was sampled September 4th. The Winter Lake and Beaver Slough trap sites were selected based on habitat conditions that were deemed suitable for mosquitoes and accessibility, following review of the area with Dr. Dan Markowski of Vector Disease Control International (VDCI) and VDCI field staff.

The Winter Lake trapping effort yielded a total of 18 total mosquitoes captured over the 11 trap nights. The average number of mosquitoes trapped at the two Winter Lake locations was 1.6 mosquitoes per trap night (Table 1). Six species of mosquitoes were captured at Winter Lake, *Culex tarsalis*, *Coquillettidia perturbans*, *Culiseta particeps*, *Aedes excrucians*, unknown *Culiseta sp.*, and *Culiseta inornata*. No saltmarsh mosquitoes *Aedes dorsalis* were captured at Winter Lake.

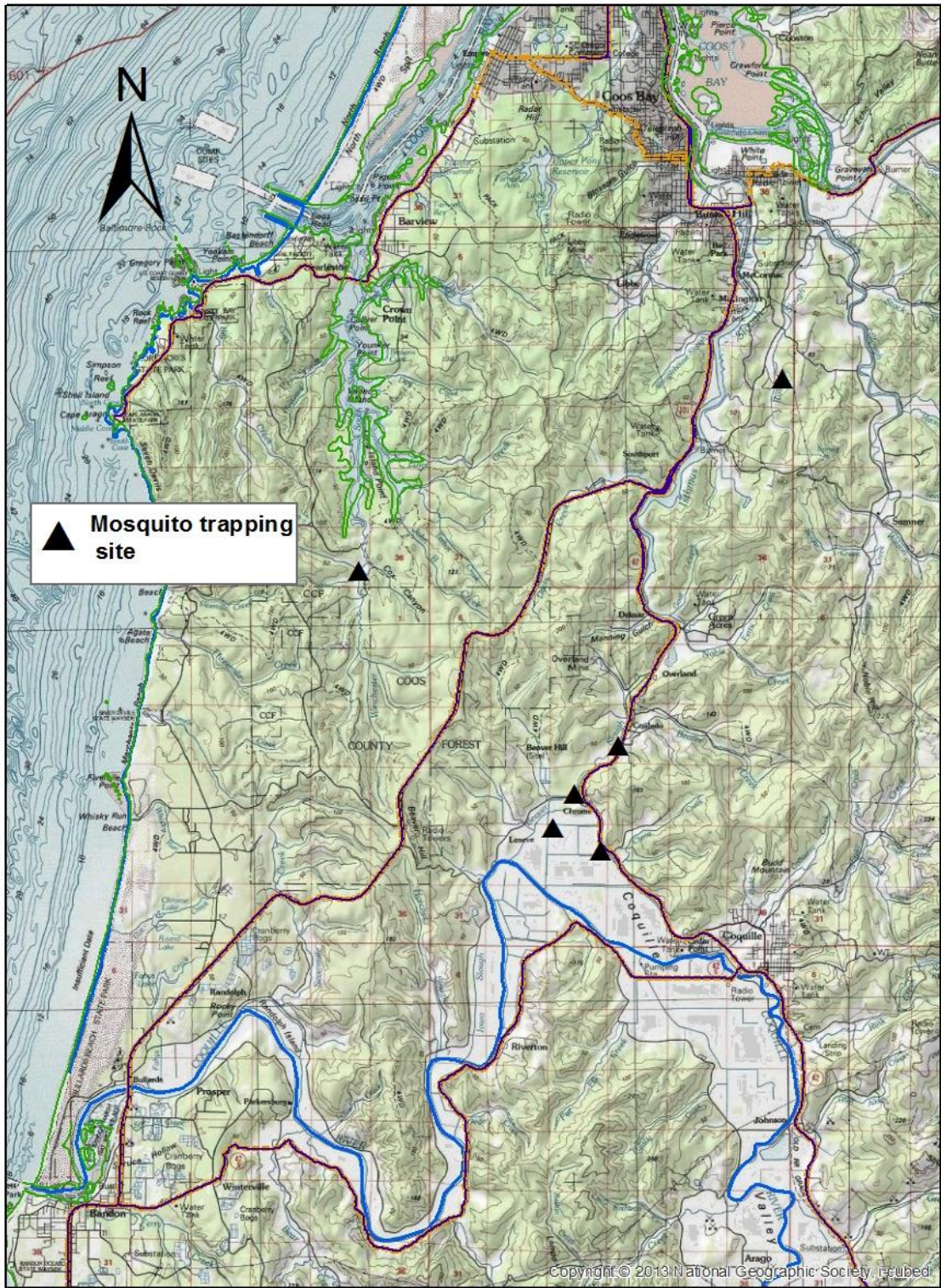


Figure 1. Location of ODFW mosquito sampling efforts in 2014.

Table 1. ODFW 2014 mosquito sampling results from Winter Lake, Beaver Slough and other locations.

Mosquito Data Analysis	Winter Lake	Beaver Slough	Hinch Bridge	Catching Slough
Average Number per trap night	1.6	1.8	92.0	16.0
Total Trap Nights	11	11	1	1
Average Trap Hours	14.9	15.7	15.0	11.5
Total Captured	18	20	92	16
Total Hours Trapped	163.9	172.5	15.0	11.5
Average Number per hour	0.110	0.116	6.133	1.391
Total Number of species	6	2	1	5

The Beaver Slough trapping effort, captured a total of 20 total mosquitoes for 11 total trapping nights at the two locations. The average number of mosquitoes captured at the two Beaver Slough locations was 1.8 mosquitoes per trap night (Table 1). Two species of mosquitoes were captured at Beaver Slough: *Culex tarsalis*, and *Coquillettidia perturbans*. No saltmarsh mosquitoes (*Aedes dorsalis*) were captured at Beaver Slough. The Hinch Bridge location yielded a notable number of saltmarsh mosquitoes (92 total; Table 1) on the single night of trapping. The Catching Slough location trapping effort yielded a total of five species: *Culex tarsalis*, *Aedes dorsalis*, *Culiseta inornata*, *Aedes implicatus*, and *Culiseta particeps*. The average number of mosquitoes captured per trap night was relatively uniform for all locations other than Hinch Bridge (Figure 2).

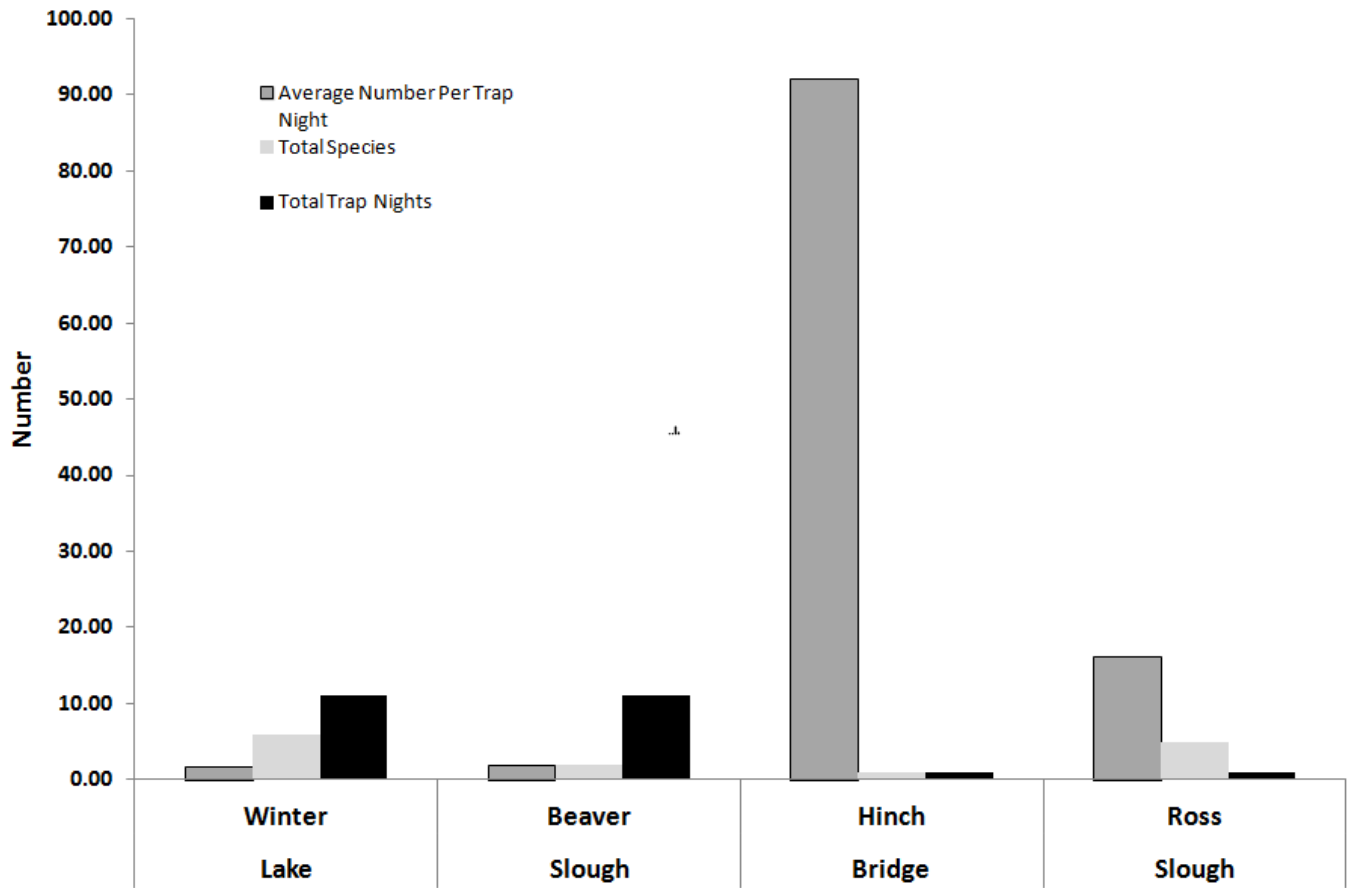


Figure 2. Mosquitoes trapped per trap night and total number of mosquito species trapped for 2014 ODFW sampling.

Please feel free to contact Christopher Claire at 541-888-5515 if you have any questions regarding this information.

Sincerely

Christopher W. Claire

Christopher W. Claire
Habitat Protection Biologist

cc. Michael Gray
Stuart Love
Timothy Walters