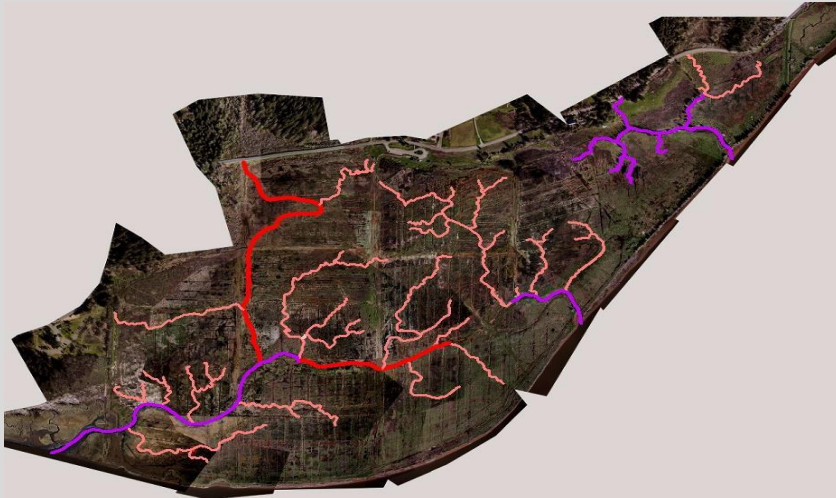


Tidal channel system after 2011 restoration: 5 miles



Tidal Channel System after 2014 Phase 4: Additional 22.7 miles



- Purple – Natural, unmodified
- Red – Large excavated (5' - 9" wide)
- Pink – Medium excavated (2' - 5" wide)
- Green – Second order excavated
- Yellow – First order excavated